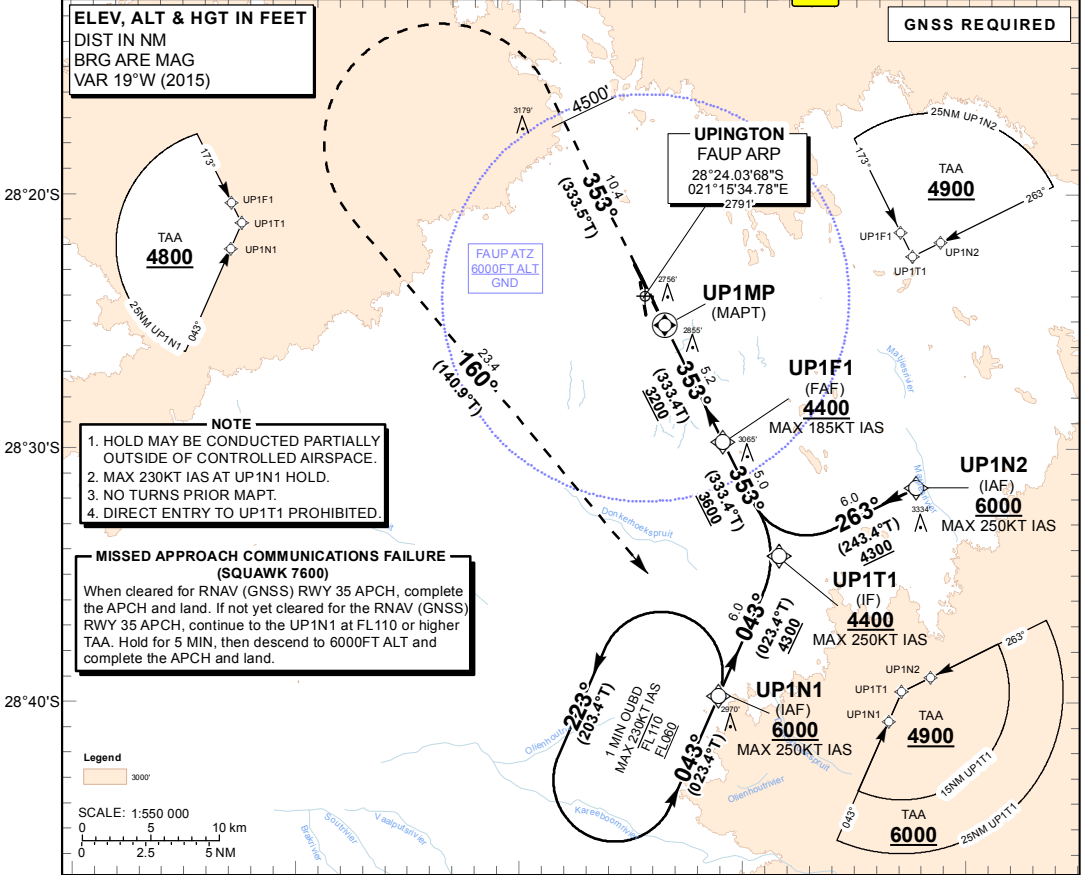




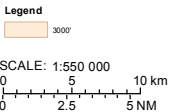
**ELEV, ALT & HGT IN FEET**  
 DIST IN NM  
 BRG ARE MAG  
 VAR 19°W (2015)

**GNSS REQUIRED**



- NOTE**
- HOLD MAY BE CONDUCTED PARTIALLY OUTSIDE OF CONTROLLED AIRSPACE.
  - MAX 230KT IAS AT UP1N1 HOLD.
  - NO TURNS PRIOR MAPT.
  - DIRECT ENTRY TO UP1T1 PROHIBITED.

**MISSSED APPROACH COMMUNICATIONS FAILURE (SQUAWK 7600)**  
 When cleared for RNAV (GNSS) RWY 35 APCH, complete the APCH and land. If not yet cleared for the RNAV (GNSS) RWY 35 APCH, continue to the UP1N1 at FL110 or higher TAA. Hold for 5 MIN, then descend to 6000FT ALT and complete the APCH and land.



50°E 21°0'E 21°10'E 21°20'E 21°30'E

<b>Distance from THR 35</b>	5.2	5	4	3	2	
<b>ADVISORY ALT(HGT)</b>	4400 (1689)	4340 (1629)	4030 (1319)	3710 (999)	3400 (689)	

**TRANSITION ALT 5500**  
**TRANSITION LEVEL ATC**

**INA ALT: 6000**

**MISSSED APPROACH:**

MAPT at THR 35.  
 Climb to 6000' ALT. Maintain runway track to 4500FT ALT.  
 At 4500FT ALT, turn left direct to UP1N1 or as directed by ATC.

**RDH 50**

**THR ELEV 2711**

NM to/from THR RWY 35

MIN TEMP: -5°C MAX TEMP: +50°C		A	B	C	D	GS	KT	80	100	120	140	160
Straight-in Approach	LNAV 2.5%	3200 (489)				FAF to THR	M:S	3:54	3:07	2:36	2:13	1:57
	VNAV 2.5%	3030 (319)				Rate of descent	FPM	420	525	630	735	841
	RVR	1500m	1800m	2000m		<b>NOTE:</b>						
	ALS OUT	1500m	1800m	2000m		1. LNAV/VNAV RoD 5.20%.						
	Circling	3250 (459)	3310 (519)	3520 (729)	3640 (849)	2. Turns prior MAPT prohibited.						
						3. Baro VNAV operations not authorised below -5°C.						
						4. MAX VPA 3.5°.						

CHANGE: WPT Speed Restrictions